



# Update on the 2021 Atlantic Menhaden Fishing Season

## NOAA FISHERIES

Sustainable Fisheries Branch  
NMFS Beaufort Laboratory  
Beaufort, NC

GSMFC Spring Meeting  
Panama City Beach, Florida  
(Teleconference)  
March 2, 2021



# 2021 Landings for Reduction

- One factory on Atlantic coast at Reedville, VA, since 2005
- Coastwide Total Allowable Catch limit (TAC) reduced (194,400 metric tons)
  - 136,253 mt allocated for reduction (prior to set-aside)
- Landings for 2021 reduction fishery:
  - 136,690 mt (or 449 million standard fish)
  - Increased 9.7% from 2020 (124,604 mt)
  - Increased 0.1% from previous 5-yr average (136,612 mt)

# Vessel Participation for 2021

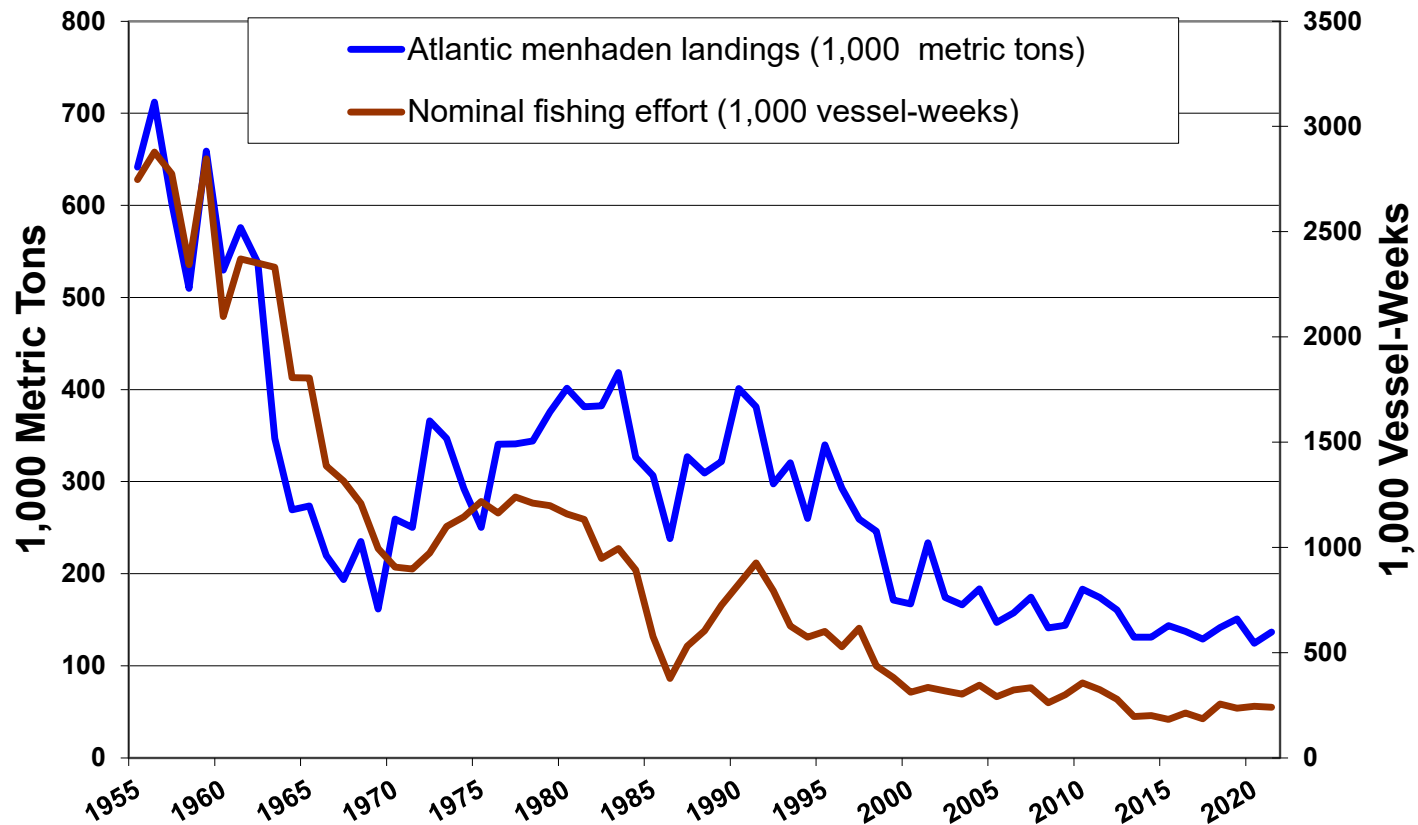
- 9 Omega Protein vessels unloaded Atlantic menhaden for reduction in 2021 at Reedville
- 1 VA 'snapper-rig' boat (bait vessel) also unloaded for reduction at Omega
  - One landed for **bait** only



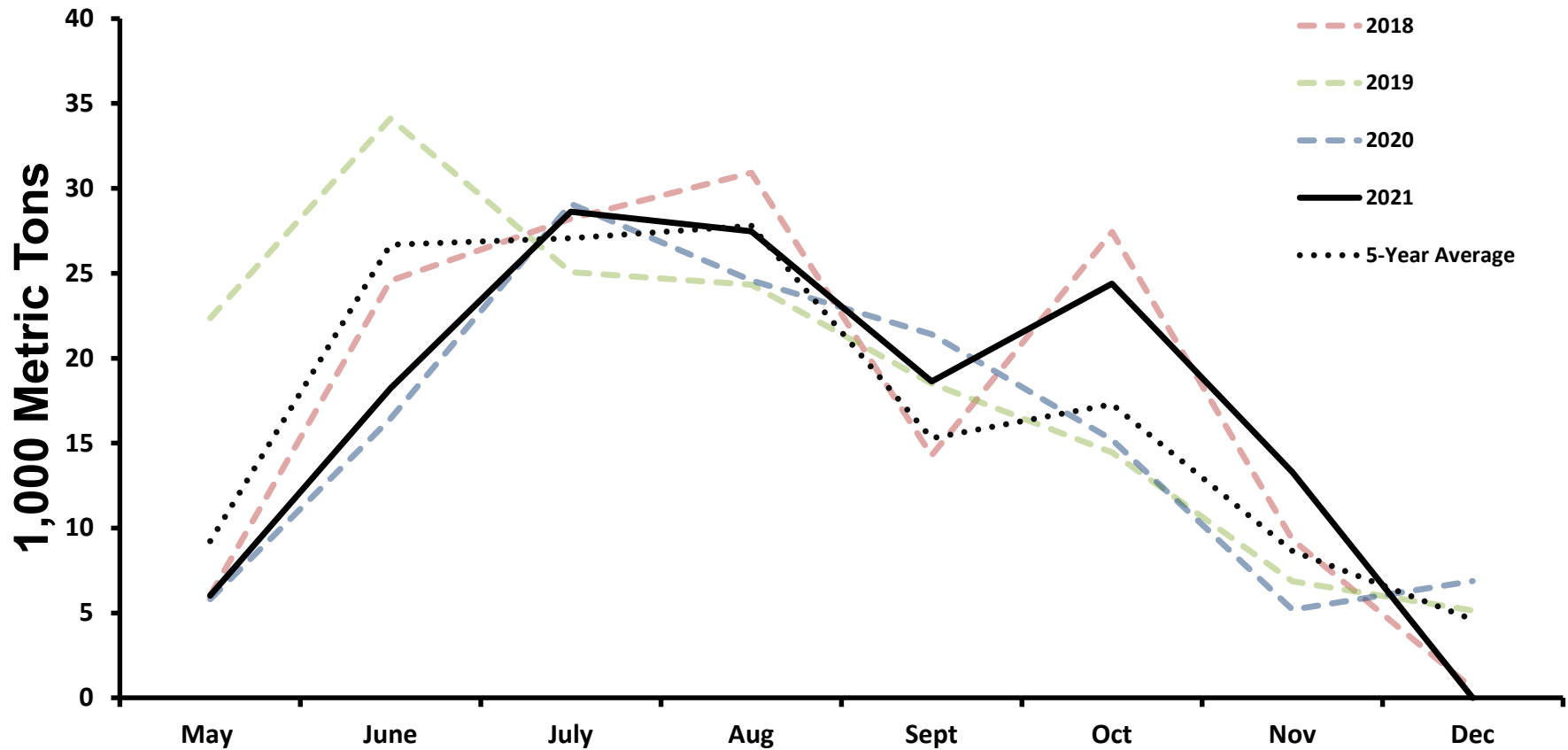
# Coastwide Stock

- Large menhaden landings in Northeast
  - “Episodic Event” declared for bait fishing
- Bait fisheries
  - New York, New Jersey, Rhode Island, Massachusetts, and Maine participated in the episodic event this season
- First months of season proceeded below average
  - Increased above 5-year average at the end of the season
- Relatively few direct tropical cyclone strikes, many indirect effects from cyclones

# Reduction Landings and Nominal Fishing Effort

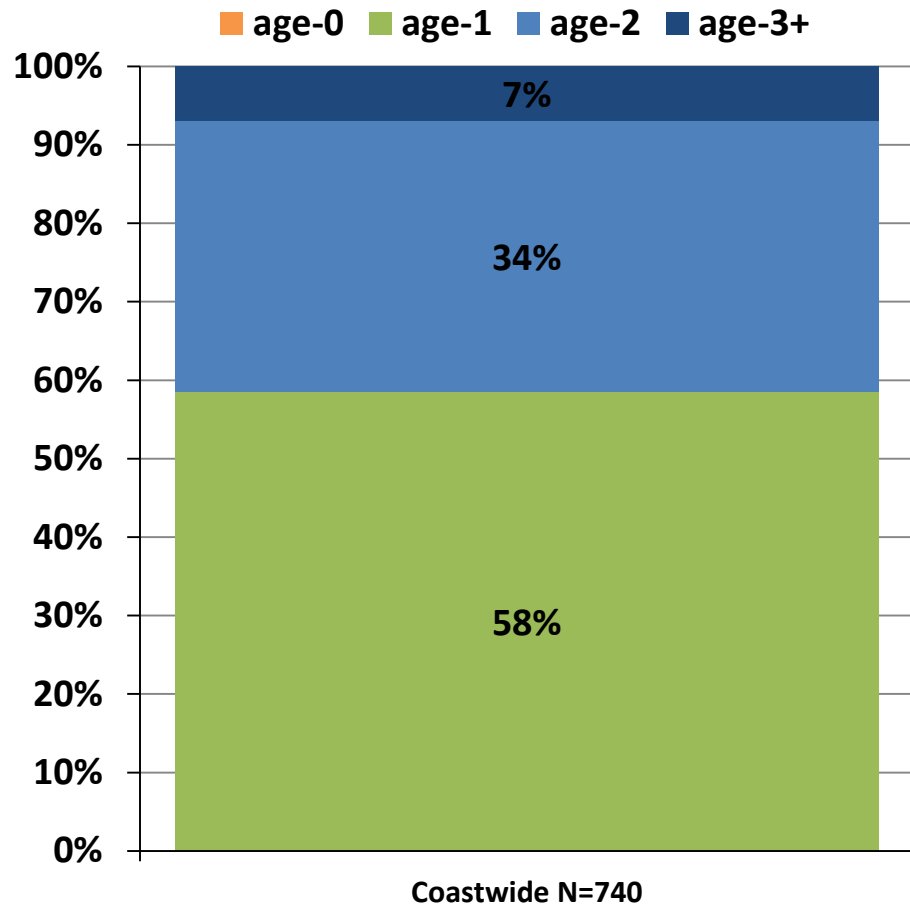


# 2021 Landings by Month



# Age Compositions in 2021 by Coast

from preliminary catch-at-age matrix



- Age estimates for Atlantic update assessment prioritized

# Coastwide Stock

- 2014 benchmark assessment
  - Stock is not overfished and overfishing not occurring



# Coastwide Stock

- 2014 benchmark assessment
  - Stock is not overfished and overfishing not occurring
- Atlantic Menhaden Management Board
  - 2012 Established an 170,800 mt coastwide Total Allowable Catch
  - 2015 increase in TAC (187,880 mt)
  - 2017 TAC increased to 200,000 mt
  - 2018 TAC increased to 216,000 mt
    - Allocation adjusted from Amendment 2

# Coastwide Stock

- 2014 benchmark assessment
  - Stock is not overfished and overfishing not occurring
- Atlantic Menhaden Management Board
  - 2012 Established an 170,800 mt coastwide Total Allowable Catch
  - 2015 increase in TAC (187,880 mt)
  - 2017 TAC increased to 200,000 mt
  - 2018 TAC increased to 216,000 mt
    - Allocation adjusted from Amendment 2
- Amendment 3 to the Interstate Fishery Management Plan
  - Kept TAC to 216,000 mt
  - Adjusted allocation of landings

# Coastwide Stock

- 2014 benchmark assessment
  - Stock is not overfished and overfishing not occurring
- Atlantic Menhaden Management Board
  - 2012 Established an 170,800 mt coastwide Total Allowable Catch
  - 2015 increase in TAC (187,880 mt)
  - 2017 TAC increased to 200,000 mt
  - 2018 TAC increased to 216,000 mt
    - Allocation adjusted from Amendment 2
- Amendment 3 to the Interstate Fishery Management Plan
  - Kept TAC to 216,000 mt
  - Adjusted allocation of landings
- 2019 benchmark assessment
  - Single-species stock assessment passed peer review
  - Multi-species stock assessment also passed
- Atlantic Menhaden Management Board
  - Reduced TAC 10% for 2021 and 2022 fishing seasons

## 2021 Atlantic Menhaden TAC, by allocation unit

Unit	Percent of TAC	2019 (1,000 Metric Tons)
ME	0.52%	995
NH	0.5%	962
MA	1.3%	2,453
RI	0.52%	996
CT	0.52%	993
NY	0.69%	1,330
NJ	10.9%	20,925
PA	0.5%	962
DE	0.51%	986
MD	1.9%	3,634
PRFC	1.1%	2,066
VA (Reduction)	70.8%	136,253
VA (Bait)	7.9%	15,139
NC	1.0%	1,840
SC	0.5%	962
GA	0.5%	962
FL	0.52%	997
<b>Total</b>		<b>192,456*</b>

\* Does not include the 1% episodic set-aside